

**2020**

ILLUMINATION  
**SYSTEM**

MADE IN ITALY 



**OKITE®**  
**OKITE.COM**

# **OKITE®** Translucent Collection

## Illumination System

### LED LIGHT PANEL

#### Customizable

- Any size up to 4' x 8'

#### Bright & Even Illumination

- 3D V-Cutting technology
- High brightness (2,000 - 10,000 LUX)
- Superior consistent light quality

#### Long Lifespan

- Patented heat sink technology to maximize LED lifespan (70,000 hours)

#### Energy Efficient

- Low power consumption (70% less than fluorescent)
- Energy saving and maintenance free

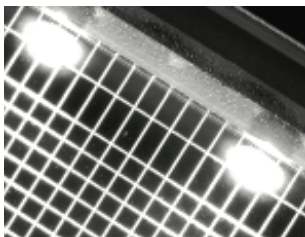
#### Warranty

- Advanced 3-year warranty



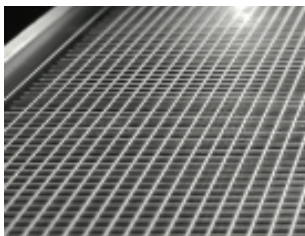
### PERFECT BACKLIGHTING SOLUTION

The LED light panel is designed to emit a bright, even output of light across the entire surface of the panel. Unlike traditional light panels, which have the light source mounted on the exterior of the LGP (Light Guide Plate), our panel integrates high brightness LEDs and the heat sink into our exclusive 3D V-cutting LGP which makes it possible to produce “frameless”, rectangular or special shaped LED light panels for various application needs.



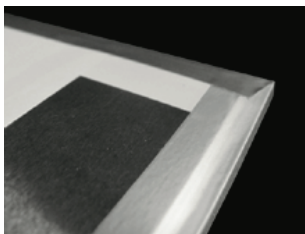
#### Integrated High Quality LEDs

The LED light panel integrates high quality 12V, constant voltage LEDs into the perimeter of the LED panel without the use of rigid frame materials. This process allows the LEDs to conform to almost any shape.



#### 3D V-Groove Light Guide Plate (LGP)

The LED light panel utilizes crystal clear acrylic combined with a patented 3D V-groove etched grid pattern that provides even illumination to almost any shape imaginable.



#### Integrated Thermal Management

All LEDs create heat which is detrimental to their life span. Our LED light panel implements a patented technology which integrates the heat sink into the LGP that is easily conformable which allows for customizable shapes.

## LPV-60

60W Single Output Switching Power Supply



### Features

- Constant voltage design
- Universal AC input / Full range
- Withstand 300VAC surge input for 5 seconds
- Protections: Short circuit / Overload / Over voltage
- Cooling by free air convection
- Fully encapsulated with IP67 level
- Fully isolated plastic case
- Class II power unit, no FG
- Class II power unit
- Pass LPS
- Suitable for LED lighting & moving sign applications
- 100% full load burn-in test
- Low cost, high reliability
- 2 year warranty

## LPV-60

60W Single Output Switching Power Supply



The M series LED controller is compatible with 8 different kinds of remotes. The M4-5A receiver can receive single color/CT dimming, RGB/RGBW control functions to meet a wide range of lighting requirements. With the M series RF remotes, brightness, color as well as customizable color control modes are easily achievable. Choose the remote that is right for your application.

### Remote

Model: M1/M2/M3  
Working Voltage: DC3V (battery CR2032)  
Working Frequency: 433.92MHz  
Remote Distance: 131 Feet - 164 Feet  
Working Temp: -4°F - 131°F  
Weight (N.W.): 42g

### CV Receiver

Model: M4-5A  
Input Voltage: DC5V-DC24V  
Max Current Load: 6Ax3CH Max 18A  
Max Output Power: 90W/216W/432W  
(5V/12V/24V) Gray Scale Level: Max 4096 x 4096  
Working Temp: -22°F-131°F  
Weight (N.W.): 125g



**OKITE®**  
**OKITE.COM**

**EUROPE**

**SIC S.R.L.**

Corso Vittorio Emanuele II,30  
20122 MILANO (MI)  
Italia

Tel.: +39 02 870 72 836  
Fax: +39 02 870 72 837

[www.okite.com](http://www.okite.com)  
[okite@okite.com](mailto:okite@okite.com)

**USA**

**SEIEFFE CORPORATION**

Importer & Master Distributor  
12227 K FM 529  
Northwoods Industrial Park  
Houston - Tx 77041  
United States

Tel.: +1 713 849 3800  
Fax: +1 713 849 3835  
Toll Free: +1 866 654 8397

[www.okite.us](http://www.okite.us)  
[info@okite.us](mailto:info@okite.us)

**OKITE.COM**